

Installation instruction Audi 80 Cabrio 50Km/h Module

Before installation:

Please read this instruction carefully and take yourself some time for proper installation of the module. Please note, that you can damage your car and/or the module if it is not correct installed.

Danger: The installation and use of the module is on your own risk. Do not open/close the roof on bad roads. You can damage the roof by opening/closing while driving. You might loose the warranty of your car. The installation and use of this module is on your own risk.

How the module works:

If the module is installed, the roof of your car can be opened/closed up to a speed of 50Km/h.

Installation:

1. disconnect battery (ground connection)
2. disassemble the rear seat. Please note picture 1,2 and 3 on the next site. You will find the roof-ECU (=Electronic Control Unit) on picture 4.
3. cut the white/blue (Pin 16 at connector B) and the brown/white (Pin 5 at connector B) cable. Please note picture 5 for more details.
Note: take care that you will cut he right cables – the colours may occur more than one time. You will find the Pin-number in the connector on the ECU.
4. you have to connect the cables from the module with the car as shown on picture 7.
5. the module should be fixed with some tape or glue. Please not Picture 6.
Danger: Don't drill any holes in the body of the car behind the rear seat, because the tank is located directly behind the rear seat !!!
6. assemble the rear seat
7. connect battery

Pictures of installation:



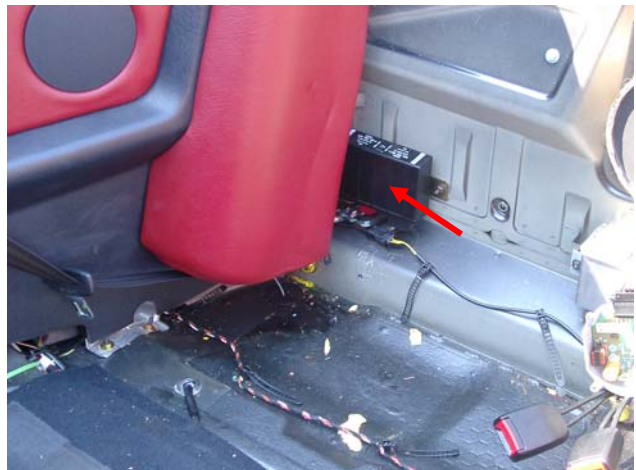
picture 1: position of screw



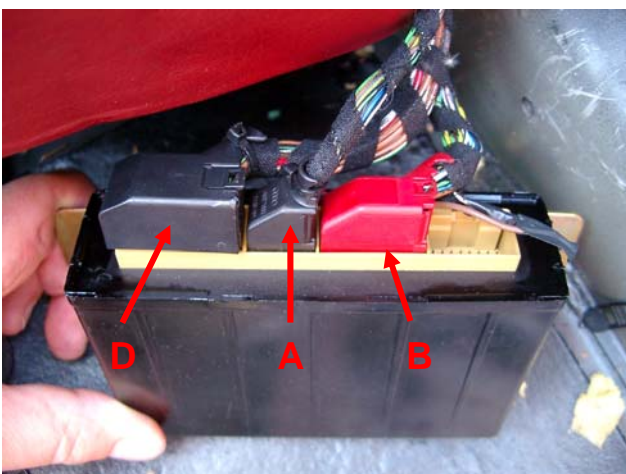
picture 2: position of screw



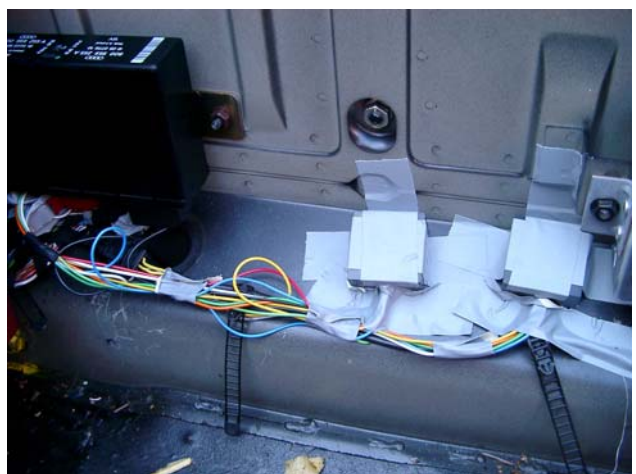
picture 3: position of screw



picture 4: ECU

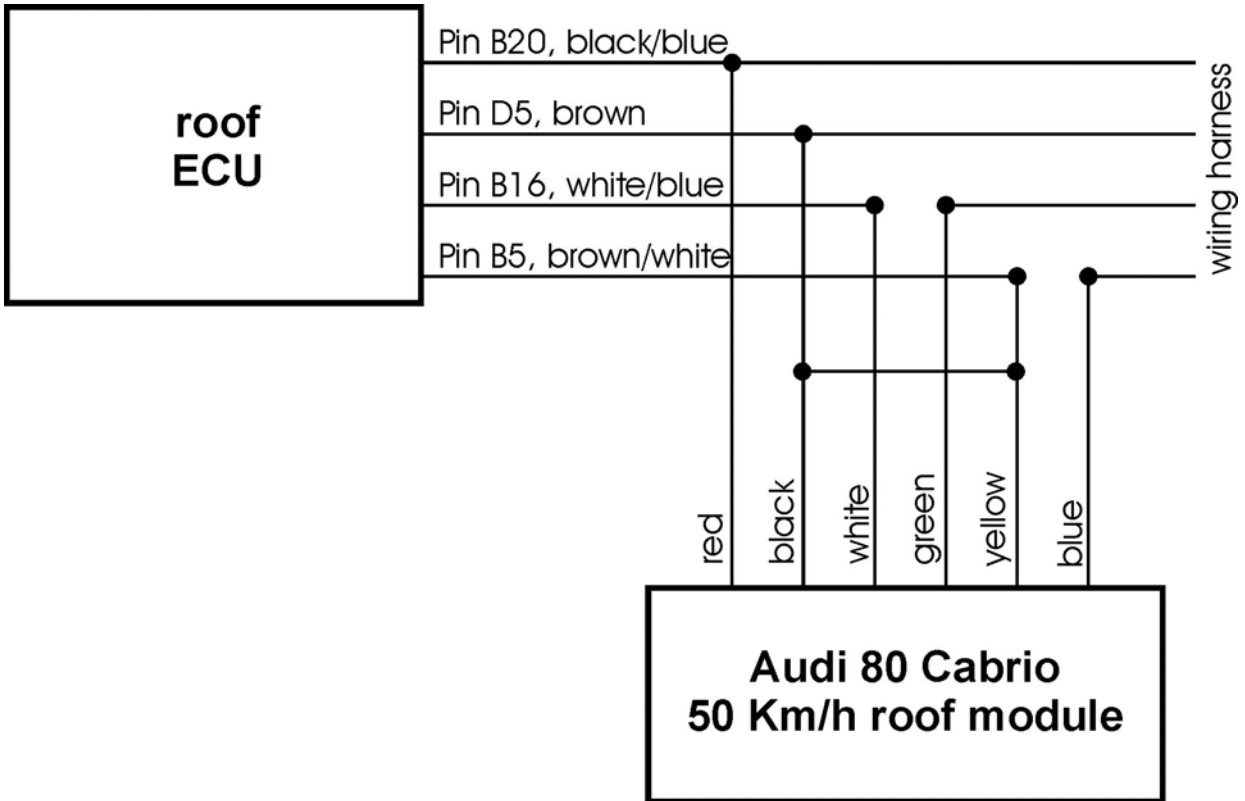


picture 5: connectors of ECU



picture 6: module fixed with tape

wiring diagram:



picture 7: wiring diagram of the module. Note: add a connection between the black and yellow cable of the module.

technical data:

- voltage range: 7-17V
- current consumption: 12 mA (when ignition is on)
- size: 40 x 40 x 20 mm³